

A horizontal row of seven light bulbs. From left to right, the colors are green, purple, blue, pink, orange, yellow, and green. Each bulb has a black base and a colored glow around it.

The image shows a collection of lightbulb-shaped cards arranged in a grid. Each card has a colored lightbulb with a word inside. The words are: 'a' (purple), 'and' (green), 'I' (red), 'to' (orange), 'up' (pink), 'me' (blue), 'the' (green), 'run' (blue), 'big' (yellow), and 'my' (red). To the right, there is a sequence of cards for a story. The first card shows a lightbulb with the words 'a the see I'. The second card shows a lightbulb with the word 'and'. The third card shows a lightbulb with the word 'and'. Below these cards, there is a question: 'How many did you find?'. To the right of the question, there is a vertical list of numbers 7, 6, 5, 4, 3, each next to a small lightbulb icon.

© 2016 Erin Lane, Inspired Elementary

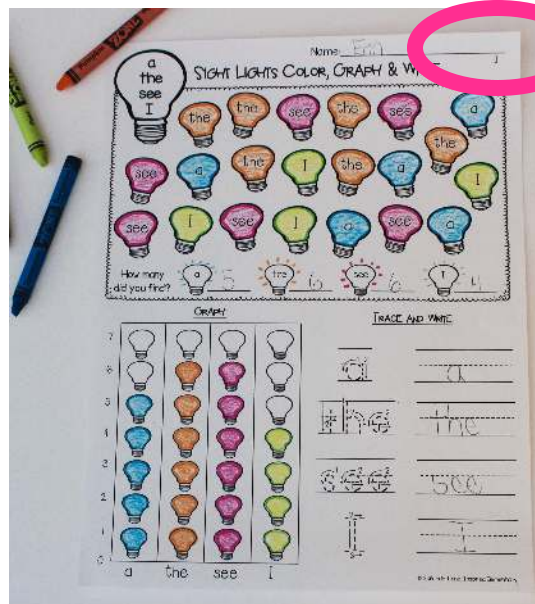
How To Use:

Sight Light Color, Graph & Write is a perfect extension activity to use after introducing or reviewing [Sight Lights](#) (sight words).



This activity is great for independent literacy time, morning work, or as take-home practice!

Each page has a number (pp-1, pp-2), so that you can easily track activity sheets already done.



READ THEM

RECOGNIZE
AND COLOR

TOTAL
NUMBER
FOUND

SIGHT LIGHTS COLOR, GRAPH & WRITE

How many did you find?

GRAPH:

	a	the	see	I
7				
6				
5				
4				
3				
2				
1				
0				

TRACE AND WRITE:

a

the

see

I

Erin Lane, Inspired Elementary

GRAPH

TRACE & WRITE

PRE-PRIMER SIGHT WORDS ON EACH PAGE:

Page Number	Sight Words
pp-1	a, the, see, I
pp-2	can, and, my, you
pp-3	big, is, little, we
pp-4	up, down, in, out
pp-5	left, right, front, back
pp-6	stop, find
pp-7	look, funny, one, you
pp-8	red, here, away, blue
pp-9	two, where, three, run
pp-10	


HELPS YOU TRACK SHEETS
ALREADY USED!



TWO DIFFERENT FORMATS INCLUDED:


Name: Erin

SIGHT LIGHTS COLOR, GRAPH & WRITE



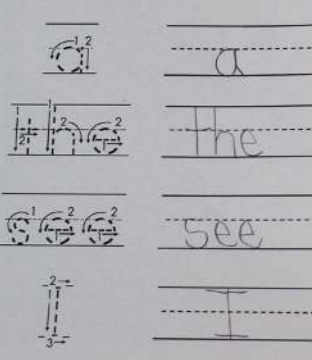
How many did you find? a: 5 the: 6 see: 6 I: 4

GRAPH:



Word	Count
a	5
the	6
see	6
I	4

TRACE AND WRITE:

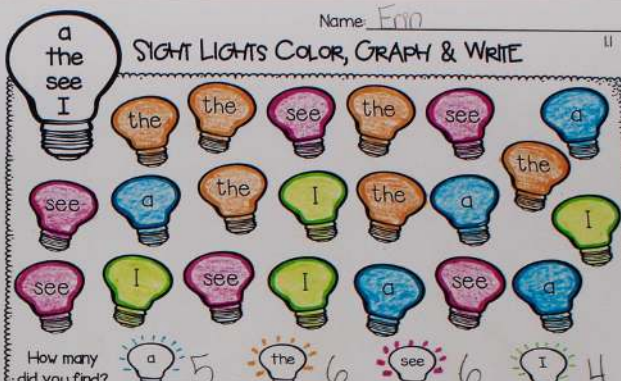


a the see I

© 2016 Erin Lane, Inspired Elementary

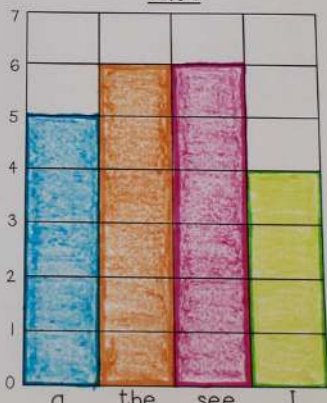
Name: Erin

SIGHT LIGHTS COLOR, GRAPH & WRITE



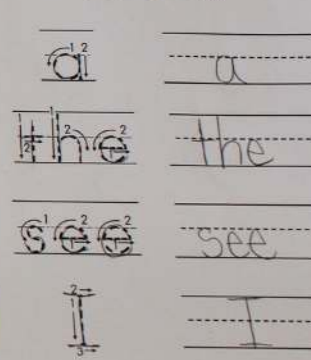
How many did you find? a: 5 the: 6 see: 6 I: 4

GRAPH:



Word	Count
a	5
the	6
see	6
I	4

TRACE AND WRITE:



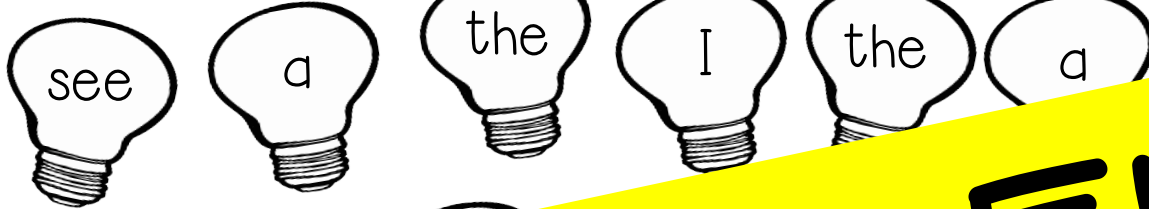
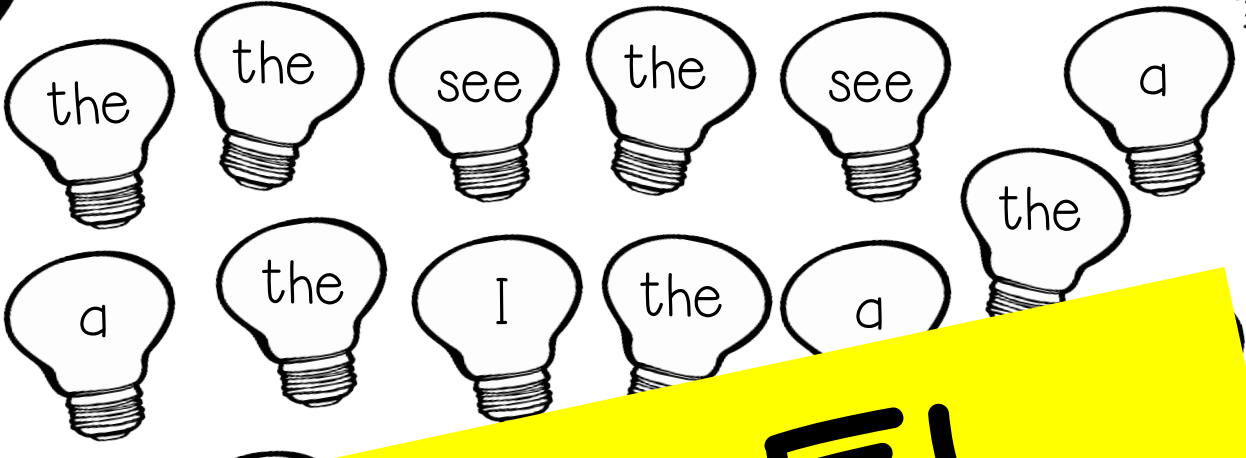
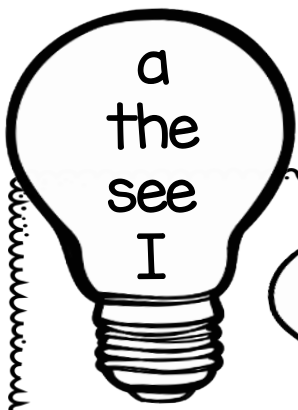
a the see I

© 2016 Erin Lane, Inspired Elementary

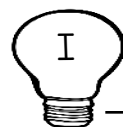
This version uses
a pictograph -
light up the
number of sight
words found

This version
uses a standard
bar graph
(column graph)

SIGHT LIGHTS COLOR, GRAPH & WRITE



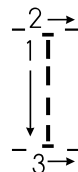
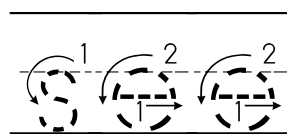
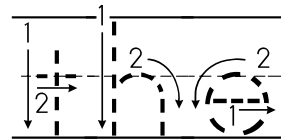
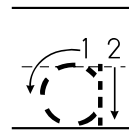
SAMPLE!



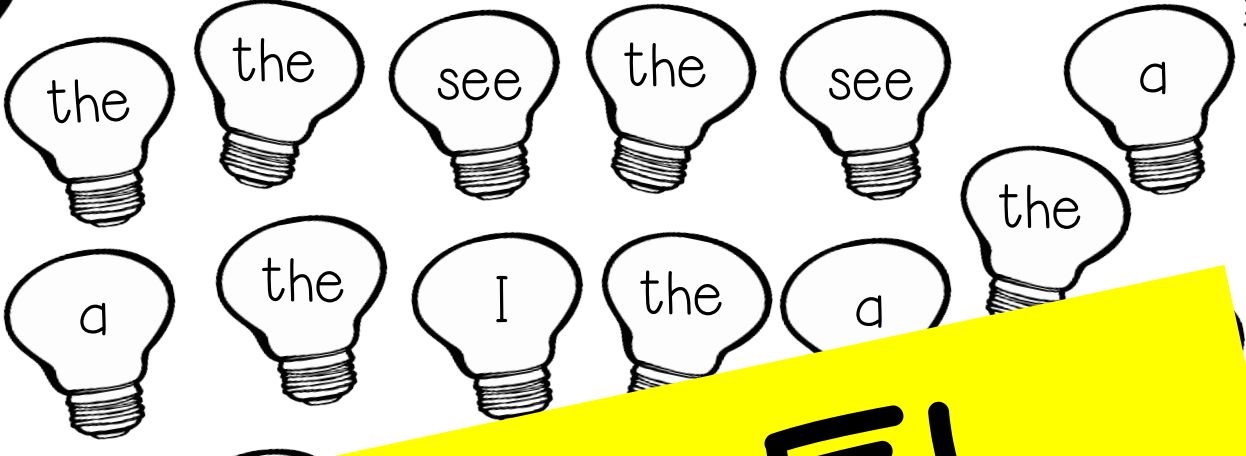
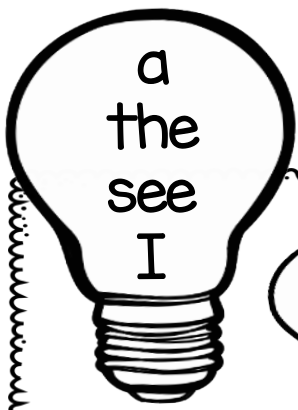
GRAPH:

TRACE AND WRITE:

7				
6				
5				
4				
3				
2				
1				
0	a	the	see	I



SIGHT LIGHTS COLOR, GRAPH & WRITE



SAMPLE!

GRAPH:

7				
6				
5				
4				
3				
2				
1				
0	a	the	see	I

TRACE AND WRITE:

